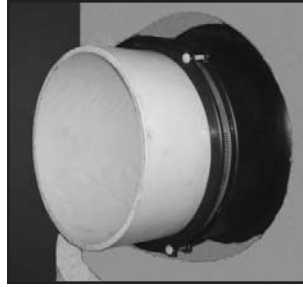


QUIK-LOK INSTALLATION INSTRUCTIONS



1) Clean penetrating pipe section of dirt, stones or debris.



3) Center pipe and insert.



2) Pull out connector from cast position and clean off debris (stones, dirt, etc.) that could weaken the sealing area.



4) After inserting pipe, the stainless steel band should be tightened with the torque wrench to 60 in.-lb., then deflect pipe to flow or angle installation requires.

WARNING: To ensure the QUIK•LOK Connector remains a flexible watertight connector, it is A•LOK Products, Inc. strong recommendation that **no mortar** be placed between the pipe and wall of the concrete structure. The use of mortar in this area would decrease the effectiveness of the connector to compensate for shear caused by settlement or ground movement.

NOTE: The 60 in.-lb. Torque Wrench is available through A•LOK Products, Inc.

CAUTION: When installing pipe stubs for future pipeline installation, all stubs must be properly restrained to prevent any movement by means other than the QUIK•LOK Connector.



697 Main Street • P.O. Box 1647 • Tullytown, PA 19007
800-822-2565 • 215-547-3366 • 215-547-5260 Fax
info@a-lok.com • www.a-lok.com